

INSTALLATION GUIDE

INTEGRATED INFOTAINMENT TOUCH SCREEN SOLUTION FOR
FIAT DUCATO 8 SERIES 2021-UP
FOR OPEN DASH VEHICLES ONLY

PART NUMBER: UN1810E-FT4



ABOUT THIS PRODUCT

Upgrade your Fiat Ducato's radio with the HEIGH10® 10-inch infotainment system. Retain all OEM features, vehicle settings, and more. All in one easy to install, plug-and-play package.

The HEIGH10® is designed to enhance screen size and infotainment features for drivers which include Apple CarPlay, Android Auto, DAB+, and Bluetooth streaming. Paired with the vehicle retention interface, key vehicle settings will be retained and controlled through the HEIGH10® display by your steering wheel controls.

The components of this kit are compatible for the Fiat Ducato Series 7 2014 - 2021 , open dash vehicles only.

Please note: this installation kit is for facelift models, and will not work with amplified vehicles.

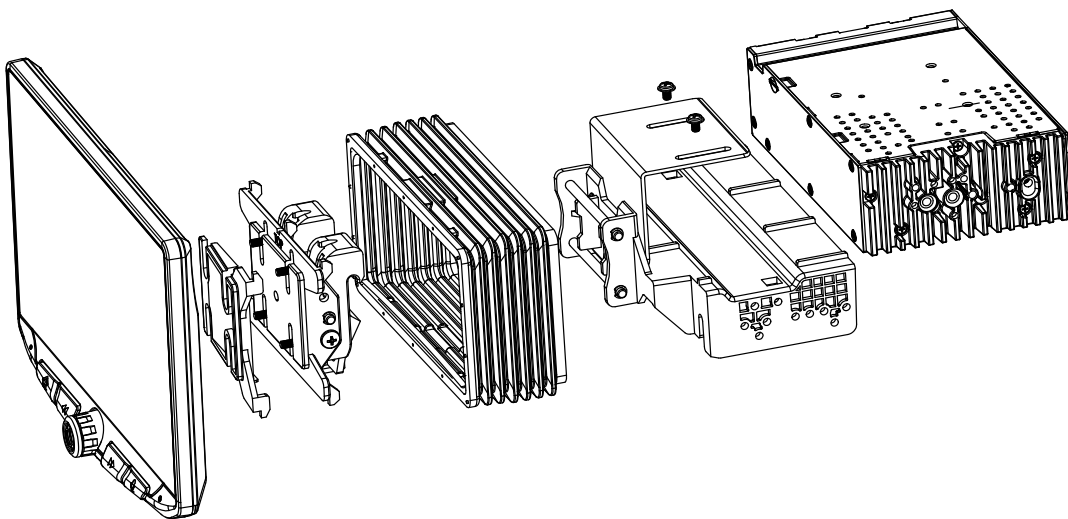


CONTENTS

- HEIGH10® unit with fitting accessories and wiring
- Black double DIN fascia plate (with accessories)
- Vehicle retention interface with plug-and-play harness
- Vehicle specific antenna adapter
- Stinger stereo patch lead
- Instruction manual

FITTING GUIDE

HEIGH10 ASSEMBLY



PRODUCT INFORMATION

The steering wheel control interface for Fiat Ducato motorhome vehicles which come without factory stereos. This interface helps to retain the steering wheel controls and phone button functionality when upgrading to an aftermarket stereo.

WIRING KEY

IN WIRING HARNESS

Purple	Right Rear Speaker +
Purple/Black	Right Rear Speaker -
Green	Left Rear Speaker +
Green/Black	Left Rear Speaker -
Grey	Right Front Speaker +
Grey/Black	Right Front Speaker -
White	Left Front Speaker +
White/Black	Left Front Speaker -

Yellow	Permanent 12V
Black	Ground
Red	Ignition 12V
Orange	Illumination
Blue	Antenna Remote

ADDITIONAL CONNECTIONS

Green	Speed Pulse
Orange	Reverse Gear

FITTING GUIDE

Read the manual prior to installation. Technical knowledge is necessary for installation. The place of installation must be free of moisture and away from heat sources. Please ensure that the correct tools are used during the installation to avoid damage to the vehicle or product. Connects2 can not be held responsible for the installation of this product.

Before installing the interface, the factory stereo must be removed and disconnected. To do this, please consult the vehicle owner's manual/handbook or contact a fitting professional.

A stereo connection (patch) lead is also required for the installation of this interface (supplied separately). Please ensure that you have the correct lead before proceeding. For universal patch leads, prepare the wiring loops in accordance with the instruction manual supplied with the product before installation.

1. Connect the 12 Pin connector from the stereo connection (patch) lead to the interface box.
2. Connect the opposite end of the stereo connection (patch) lead to the steering wheel control input on the back of the aftermarket stereo.

NOTE: This may be a 3.5mm jack connector or a wired input depending on the brand of aftermarket stereo being fitted. Please consult the aftermarket stereo installation manual for further information on where to make the connection.

IMPORTANT: THIS STEP MUST BE COMPLETED BEFORE CONNECTING POWER TO THE INTERFACE.
! FAILURE TO DO SO MAY RESULT IN A LACK OF FUNCTIONALITY AND THE NEED TO RE-INSTALL THE PRODUCT.

3. Connect the 14 Pin connector from supplied wiring loom to the interface box.

4. Connect the 6 Pin male connector to the grey vehicle specific connector (this will either be located toward the bottom of the dash loose, or connected via the cup holder of the vehicle - do not connect to the orange variant).

Note: if the vehicle comes equipped with a qi-charger, disconnect the charger connector and utilise the male and female in between these to act as a t-harness.



5. Route the pin end of the speed/reverse wires from the main dash aperture through and down toward the fuse panel. The bare ended wires will remain in the dashboard aperture for use on the new head unit.

6. Disconnect both the green and black connectors located at the fuse box.

7. Take the green connector and remove the blue/white wire from pin location 17 from the back of the housing. Then take the orange reverse wire from the supplied harness and plug it into the original place.

NOTE: When removing the blue/white wire from the original location, try to ensure that the retaining clip does not get damaged. If this does bend in anyway, gently bend back into shape for reuse.

8. Take the original blue/white wire from the vehicle and place this into one of the 2-pin housings. Once done, insert this 2-pin assembly into the blue housing on the supplied harness.

NOTE: the location of the blue/white wire must match the location seen from behind the blue connector.

9. Take the black connector and proceed to insert the green speed wire into pin location 22 on the back of the housing.

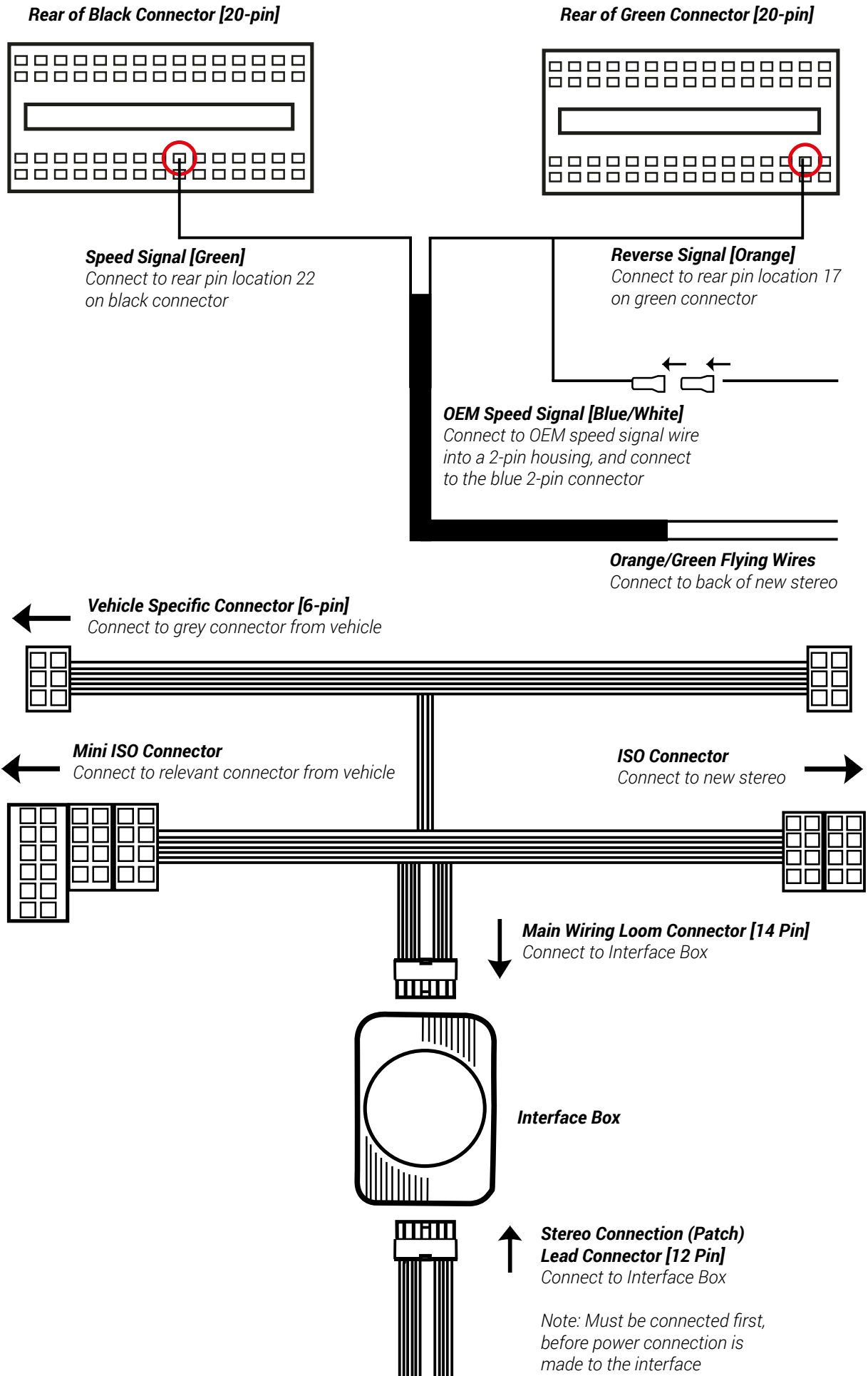
NOTE: before making any of these connections, make sure that the signals are present, as pin positions may vary dependent on vehicle.

10. Connect the power/speaker ISO connector to the power/speaker ISO connector at the rear of the aftermarket stereo.

NOTE: For aftermarket stereos which do not have an ISO connector, please see "Wiring Key" on Pg.2 for information on which wires to

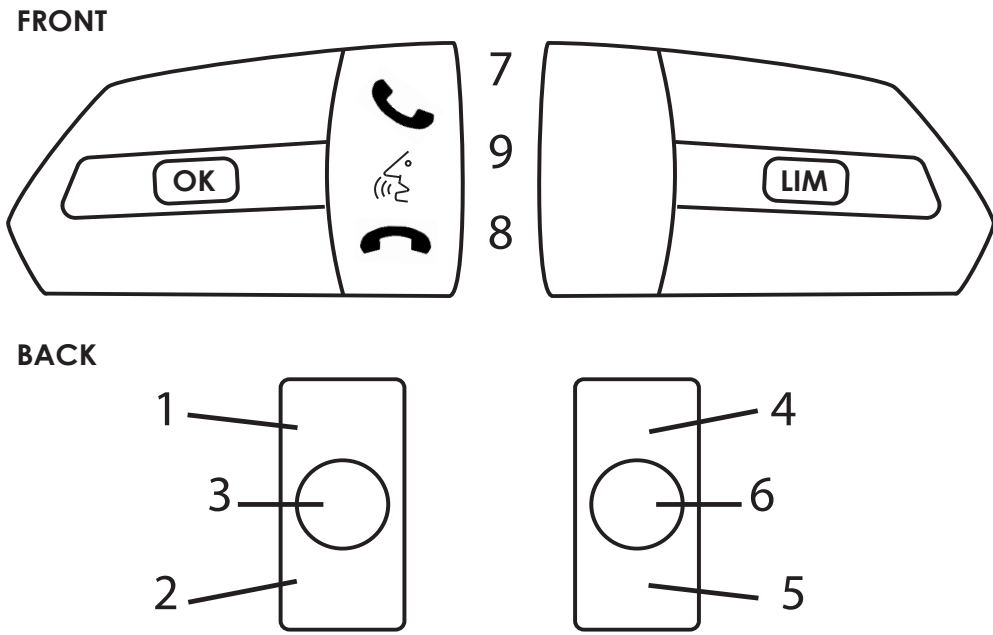
11. Connect the female Mini ISO connector on the harness to the male equivalent connectors from the vehicle and test stereo and steering wheel control functionality for correct operation before reassembling the vehicle dashboard. If steering wheel control functions are unresponsive, please uninstall the interface and wiring and re-install carefully in accordance with the above steps.

WIRING DIAGRAM



STEERING WHEEL CONTROL FUNCTIONALITY

The following diagram, though based on careful research, is an example only. Individual steering wheel control configurations may differ.



If you would like to download a digital copy of this manual, or any other product, then please visit the www.StingerElectronics-EU.com website.

This manual is considered correct at the time of printing but is subject to change. For the latest manuals & updates, refer to our website.



HEIGHT10.

TECHNICAL ASSISTANCE

For further help or assistance, please contact and fill out a support ticket with full details of your issue via : supportaampeu.zendesk.com/hc/en-us

For general enquires, contact us at:

Phone: **01384 958 500**

E-Mail: stinger.eu@aampglobal.com

Mon - Fri 9am - 5.30pm GMT

Copyright 2023 by Stinger.

AGREEMENT: End user agrees to use this product in compliance with the instructions and terms of use and with all laws. STINGER provides instructions and safety warnings with respect to this product and disclaims all liability for any use not in conjunction with those instructions or other misuse of its product. If you do not agree, please discontinue use and contact STINGER. This product is intended for off-road use and passenger use only.