

Stinger

10"
Infotainment
System

Wireless

Works with
Apple CarPlay
Works with
Android Auto

PN: SRK-JW18HX



HORIZON 10™

SRK-JW18HX USER GUIDE

FIND YOUR HORIZON

You're ready to take on any adventure with your Stinger HORIZON10 radio kit!

Additionally, your new SRK-JW18HX kit enables you to replace a Jeep Wrangler JL factory radio with a show-stopping 10-inch multimedia infotainment system while retaining OEM features and maintaining a flush, factory look and feel!

About this document

This document covers features added to the HORIZON10 by your SRK-JW18HX kit. If you need to reference the HORIZON10 user guide, you can find it bundled with your SRK-JW18HX or online at:

<https://stingersolutions.com/products/stinger-horizon10-10in-radio>



HORIZON10 USER GUIDE



CONTENTS

WELCOME TO YOUR NEW HORIZON10™ SRK-JW18HX USER GUIDE CONTENTS

Basic Operation	4
Climate Control	6
Vehicle Info	7
Vehicle Info	7
Gauges	8
Performance	9
Off-Road	10
Drivetrain	11
User Settings	12
Vehicle Settings	13
Cameras & Overlay	14
Factory USB Ports	15
PAC Steering Wheel Controls	16
Integrated Audio Settings	17
Suggested Equalizer Settings	18
Updating System Firmware	19

THE BASICS

Clock
Tap: Adjust Clock Settings

Home Menu
Tap: Launch selected app
You can press and hold a menu item to move it from this screen.

Internal Microphone

Home Button
Tap: Access the Home Menu

Favorite Button
Tap : Launch your selected favorite app

Tune / Track Down Button
Media control: Previous, Back, Seek

Multifunction Knob
Turn to adjust Volume Up/Down
Press to Mute/Unmute
Press & Hold to Sleep / Wake Unit

Navigation Button
Tap: Access Navigation

Voice Button
Launches voice control

Tune / Track Up Button
Media control: Next, Forward, Seek

Reset Button

Note: Your dash dimmer control will adjust screen brightness.

Control your HORIZON10 using factory controls

Volume Up / Down

Wake / Sleep

Mute / Unmute

Tune Up / Down

Screen Off

CLIMATE CONTROL



Current active items will be highlighted. You can change highlight color settings in **HOME > Settings > Display > System Highlights**.

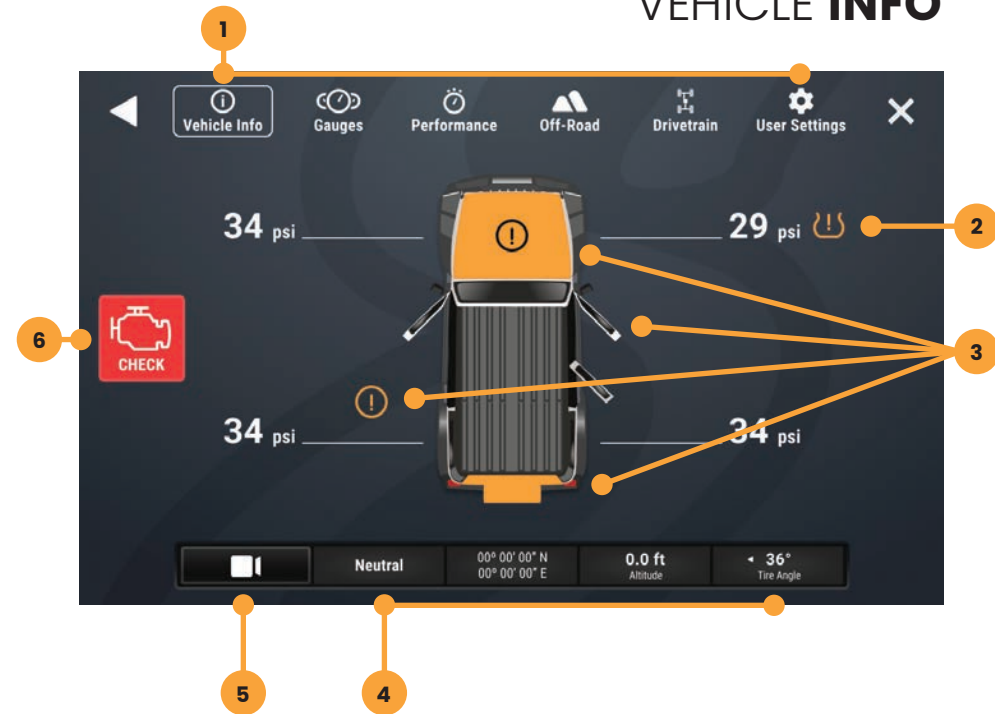
Press the **HOME BUTTON > Climate** to access the Climate Control function.

If your Jeep is equipped with Radio Integrated Climate Controls, you can view and adjust the climate control settings from the touchscreen display as well as operate the heated seats and heated steering wheel, if equipped.

The factory climate controls located below the display continues to function, and any changes made with the factory controls are reflected on the screen.

All climate control functions are explained in your Jeep Owner's Manual if you need more information.

VEHICLE INFO



Press the **HOME BUTTON > Vehicle Info** to access the Vehicle Info functions.

1. Vehicle Info Menu

Access various vehicle info display modes.

2. Tire Pressure

Low pressure warnings can be customized in User Settings.

3. Door Closed / Opened / Off

Indicates door, hood, and rear gate statuses.

4. Vehicle Info Footer

Available on all vehicle information displays. Shows Transfer Case status, GPS Coordinates, Altitude, and current Tire Angle

5. Default Off-Road Camera

Activate default camera, can be changed in User Settings

6. Malfunction Indicator

Displays current malfunction indicators. Touch indicator for more information and to clear codes.

VEHICLE INFO > GAUGES



1

2

Press the **HOME BUTTON > Vehicle Info > Gauges** to access Gauges.

1. Gauges

Tap a gauge to cycle through available gauge types.

2. Gauge Setup Preset

There are two preset gauges setups. Press and hold to save a gauge combination and then tap that setup again to recall that combination.

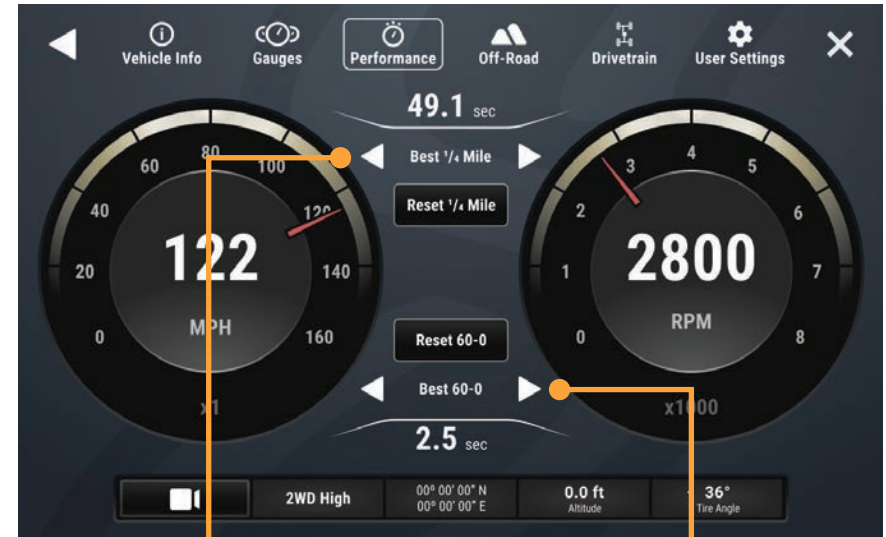
Change colors in **HOME > Setting > Display > System Highlights**

Change gauge units in User Settings.

Available Gauges:

- Battery Voltage
- Oil Temperature
- Oil Pressure
- Transmission Temperature
- Coolant Temperature
- Fuel Pressure
- Intake Air Temperature
- Engine Calculated Load
- Barometric Pressure
- Intake Manifold
- Fuel Pressure
- Absolute Load
- Ignition Timing
- Engine Run Time

VEHICLE INFO > PERFORMANCE



1

2

Press the **HOME BUTTON > Vehicle Info > Performance** to access Performance.

Selecting Performance will display a digital speedometer and tachometer along with performance measurements.

1. Best 0-60 / 1/4 Mile / 60-0

Whenever a new best performance measurement is achieved, the results will be displayed. Use left / right arrows to recall best measurements. Reset best measurements with the reset button.

2. Last 0-60 / 1/4 Mile / 60-0

Use left / right arrows to recall last measurements for each performance metric.

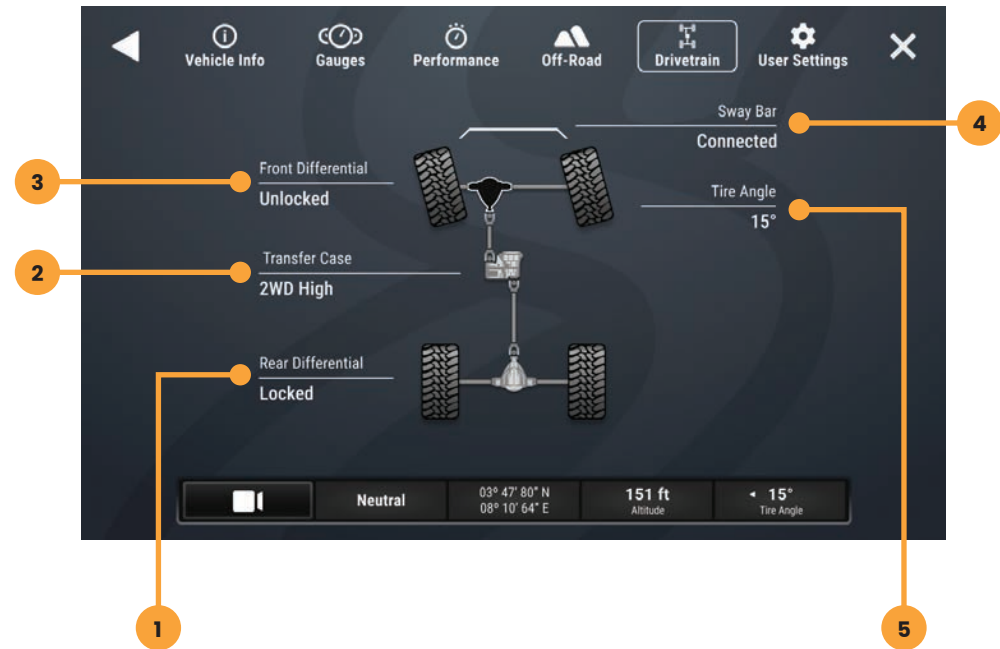
VEHICLE INFO > OFF-ROAD



Press the **HOME BUTTON > Vehicle Info > Off-Road** to access Off-Road.

- 1. Pitch
- 2. Compass
- 3. GPS / Altitude
- 4. Roll

VEHICLE INFO > DRIVETRAIN



Press the **HOME BUTTON > Vehicle Info > Drivetrain** to access Drivetrain (if equipped.)

- 1. Rear Axle
- 2. Transfer Case
- 3. Front Axle
- 4. Sway Bar
- 5. Tire Angle

VEHICLE INFO > USER SETTINGS



Press the **HOME BUTTON > Vehicle Info > User Settings** to access Settings.

NOTE: Items on this screen may vary according to your installed equipment. For example, Hill Start Assist may not appear depending on your equipment.

1. Default Off-Road Camera

Select which camera activates when you press the camera button

2. Hill Start Assist

You can toggle hill start assist on / off.

3. Scan Tool Warning

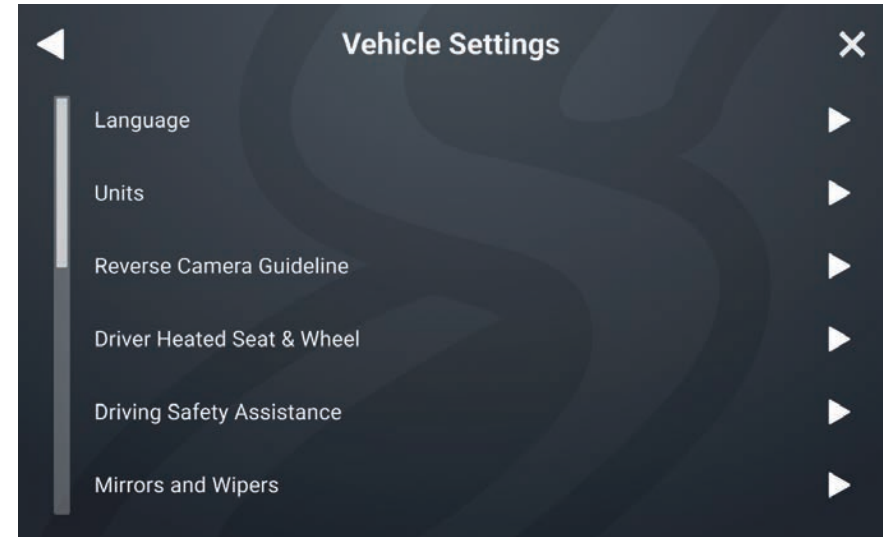
It's possible that you might have an accessory installed that makes gauge operation unreliable. If so, this control will enable or disable the scan tool

warning on the gauge cluster.

4. Low Tire Pressure

Set the threshold, for the low tire pressure warning shown on the vehicle info display.

VEHICLE SETTINGS



Press the **HOME BUTTON > Vehicle Settings** to access Vehicle Settings

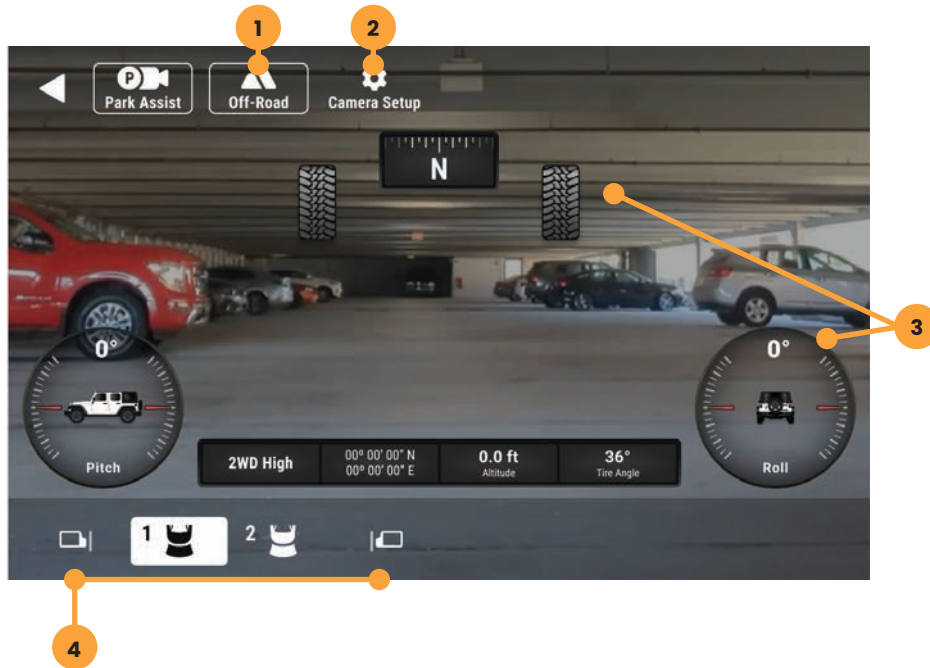
The Vehicle Settings are all the factory vehicle settings retained from the factory radio.

Since these are factory settings, with the exception of the PAC Enabled Settings, these are all explained in detail in the uConnect section of the Jeep Owner's Manual.

NOTE: The listed settings are based on how the vehicle is equipped. For example, Aux Switches will not be present if the vehicle is not equipped with Aux Switches.

NOTE: Auto Start / Stop Memory will retain adjusted Start / Stop status when the vehicle is turned off.

CAMERA OVERLAY



Press the **HOME BUTTON > Camera** to access Camera views.

The factory rear camera will continue to automatically display when in reverse and can also be activated at any time by selecting Cameras from the HOME Menu or Tabs.

When the camera is first activated, there will be menu bars at the top and bottom of the display. These bars contents will vary depending on your installed equipment. These bars will auto-hide after 5 seconds

1. Off-Road Mode

Activating Off-Road Mode will display heading, tire angle, pitch, roll, and the

vehicle information toolbar.

2. Camera Setup

Access your camera setup from this control. Turn triggers on, off, and adjust advanced camera features

3. Off-Road Overlay Elements

4. Camera Selection

Tap a camera icon to change cameras. Contents of this area will change based on your installed equipment

FACTORY USB PORTS

Apple CarPlay and Android Auto require a dedicated USB port. The factory USB port inside the center console will function for Apple Carplay/Android Auto, and all other USB ports can be used for USB thumb drives and charging only.

Factory Center Console Port [2]:

- Apple Carplay
- Android Auto
- USB Drive Media
- Charging



Factory Dashboard Part [1]:

- USB Drive Media
- Charging

The AUX Input can be accessed by selecting A/V Input from the HOME Menu



Factory Rear Console Port [3]:

- USB Drive Media
- Charging

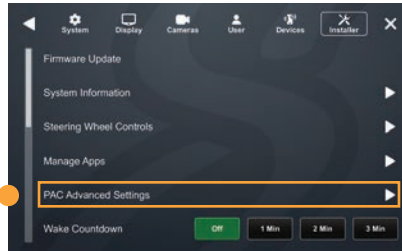


PAC STEERING WHEEL CONTROLS

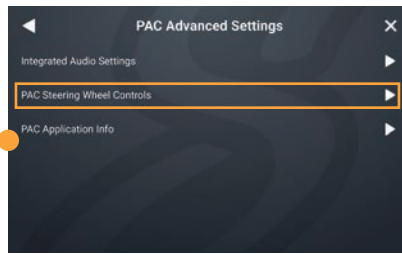
The PAC interface allows retention and customization of the factory steering wheel control buttons.

By default they will be programmed according to the factory functions. You may change the function or add Long Press functionality to any button. For example you can assign Long Press on Volume Down to activate Mute.

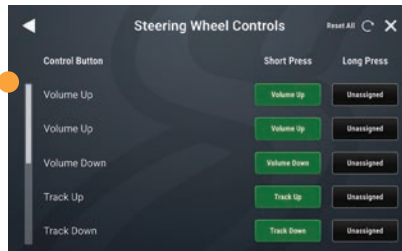
1. Access Installer Settings (Code 0052) and select PAC Advanced Settings



2. Select PAC Steering Wheel Controls

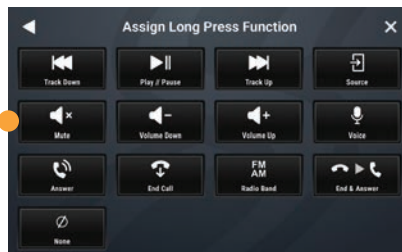


3. To change or add a SWC function, touch the corresponding short or long press assignment

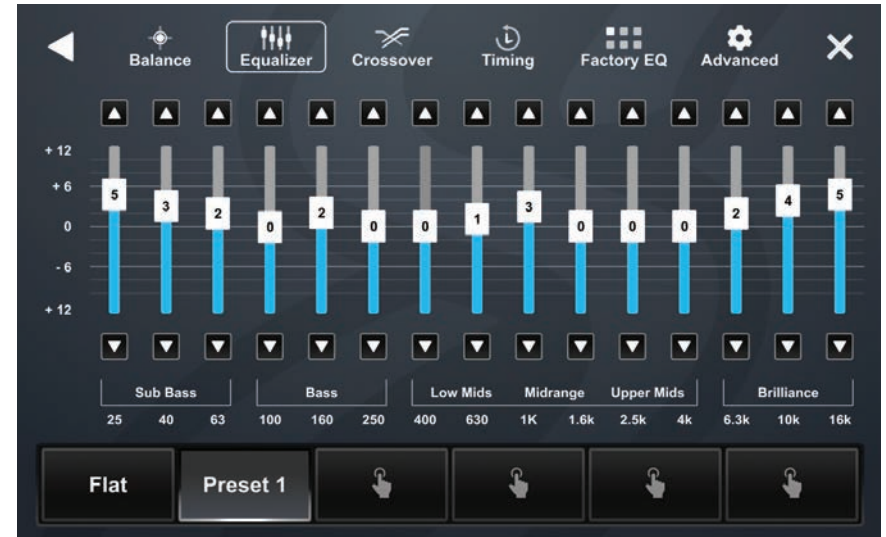


4. A function menu will be displayed with the current function highlighted.

Select any of the functions to assign that function to that button.



SUGGESTED EQUALIZER SETTINGS



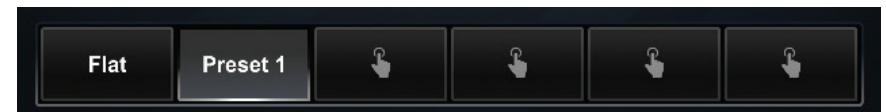
Stinger is happy to provide a suggested equalizer curve for your Jeep's audio system.

1. Press the **HOME BUTTON > Audio Settings > Equalizer** to access the Equalizer Audio Settings.

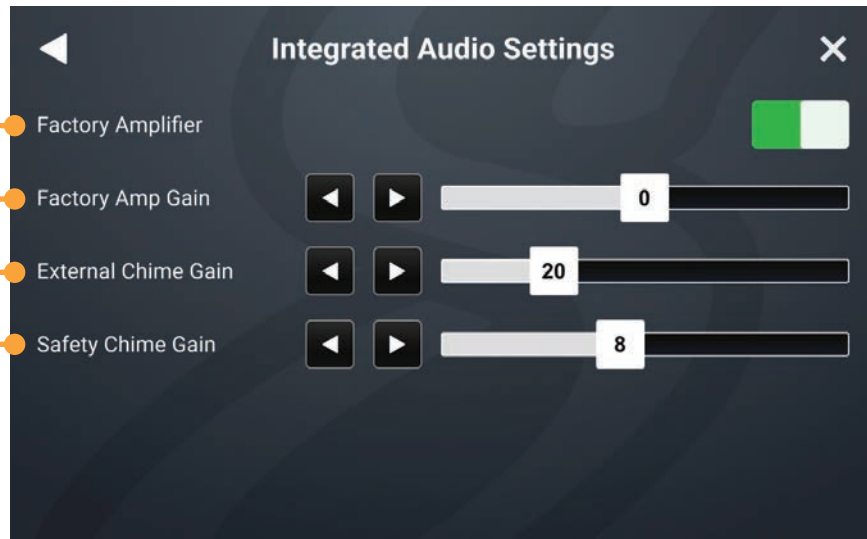
2. Set your equalizer settings to match the below table:

25 Hz	40 Hz	63 Hz	100 Hz	160 Hz	250 Hz	400 Hz	630 Hz	1000 Hz	1600 Hz	2500 Hz	4000 Hz	6300 Hz	10000 Hz	16000 Hz
+5	+3	+2	0	+2	0	0	+1	+3	0	0	0	+2	+4	+5

3. Press and hold one of the available preset buttons at the bottom of the screen until it saves your preset.



INTEGRATED AUDIO SETTINGS



Press the **HOME BUTTON** > **Settings** > **Installer** > **PAC Advanced Settings** > **Integrated Audio Settings** to access advanced audio settings.

NOTE: If your Jeep is equipped with premium sound (amplified), Vehicle Audio Settings will be present here.

1. Factory Amplifier

Toggle ON if factory amplifier is present. When ON factory crossovers and time correction are retained and the HORIZON10's crossovers and time correction are disabled.

2. Factory Amplifier Gain

Adjusts gain of factory amplifier

3. External Chime Gain

Sets chime level of external speaker if installed.

4. Safety Chime Gain

Sets gain level of factory chimes.

UPDATING SYSTEM FIRMWARE

1. Format a USB Drive

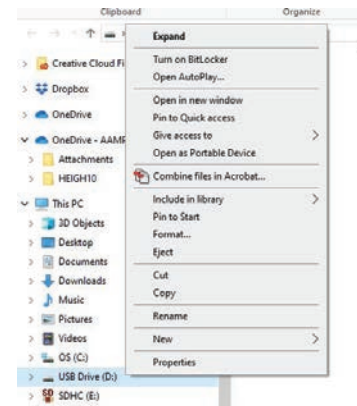
In order to prepare a USB Flash Drive for use with your HORIZON10 system, the USB drive must be formatted to FAT32 / MS-DOS(FAT).

Windows PC

1. Insert a 4GB+ USB Drive
2. Open File Explorer



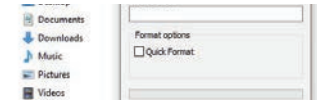
3. Right click on USB Drive and select Format



4. Select FAT 32 (Default) File System



5. Deselect Quick Format



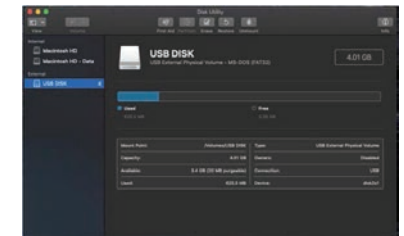
6. Click Start

MAC OSX

1. Insert a 4GB+ USB Drive
2. Launch the Disk Utility App from the Utilities folder



3. Select the USB drive from the External List and click Erase



4. Select MS-DOS(FAT) from the format drop-down menu and click Erase

